

Specifications

LED Panel

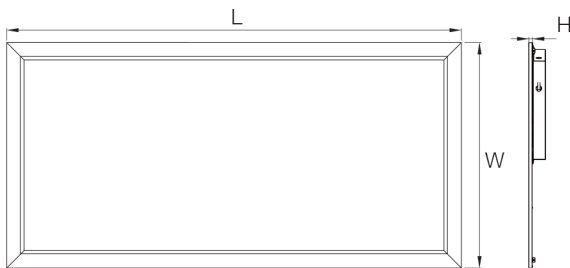
UL/CUL/DLC Edgelit panel

• Product Features

- 90 LM/W by latest LED technology
- 1-10V dimmable without flickering
- Color index: Ra>80/ R9>0
- Universal input voltage: AC90-277V
- Extra thin aluminum frame 10mm
- White or silver paint finish
- LED driver built-in junction box for easy replacement
- Housing material: Aluminum + PMMA + diffuser
- Driver tray is available for easy replacement
- Custom-made size is available
- Recessed / surface mounting / suspension installation



• Product dimension drawing



Product Type	Size L	Size W	Size H
2x2ft	603mm	603mm	10mm
4x1ft	1212mm	301mm	10mm
4x2ft	1212mm	603mm	10mm

• Product code policy

TP -PLX X XX X X - XX - XX -XX

01 02 03 04 05 06 07 08 09

- 01. Company name: TP: TOPPO LIGHTING
- 02. Product category: PL1: square
- 03. Product color: S: Silver; W: White;
- 04. Product dimension: eg: 21: 600x300mm; 62: 620x620;
- 05. Installation: eg: R: embedded installation;
- 06. Product Version: D/D; K/K; G/G;
- 07. Rated power: eg: 20: 20W; 40: 40W;
- 08. Color Temperature: eg: W1: 2500~3000K; N1: 4000~4500K;
- 09. Series No.: eg: E0; E1;

• Application

Replaces fluorescent grid, Retail, offices, schools, hospitals, Corridors and stairwells, Suspended ceiling lighting for offices eg.



Specifications

• Technical / Electrical Characters (at TA=25°C)

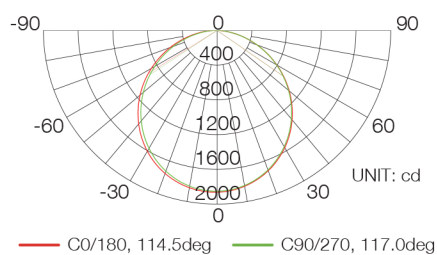
Item	Symbol	2x2	60W	1x4	2x4
Rated Power	W	40W	60W	40W	60W
Product Code	/	GPL 40	GPL 60	GPL 40	GPL 60
LED Qty	SMD2835	96pcs	168pcs	96pcs	168pcs
Luminous Flux	Lm	typ. 3200-3600	typ. 5000-5400	typ. 3200-3600	typ. 5000-5400
Power Factor	PF	PF>0.95			
Color Temperature	TC (K)	WW: 2500-3000K, NW: 4000-4500K PW: 5000-5500K			
LED forwarder current	mA	Constant 50mA			
Input Voltage	V	AC90-277V 50/60Hz			
Working Voltage	V	Constant DC36-42V			
Housing material	/	Aluminum Frame + PMMA			
Protection Class	IP	IP20			
Temperature	°C	Operation : -15°C~+50°C		Storage: -25°C~+50°C	
Life Time	h	50,000 hours			
Warranty	/	5 years			

• Technical Specification

Item	Symbol	Specification / Data
Color Index	CRI	Ra>80 , R9>0
Luminous Efficacy	Lm/W	Typ. 90 lm/W
Color consistency in level	/	Max. 6SDCM
THD	%	<15%
Starting Time	S	<0.5S
Switching Cycle before Failure	/	>100,000
Premature failure rate @1000h	/	0
Lumen Maintenance @ 6000h	%	>80%

• Luminous Intensity Distribution Curve

AVERAGE BEAM ANGLE (2 1/20): 120DEG



Product Code	Average Beam Angle
TP-PL1S22RK-40-U0	120deg
TP-PL1S22RK-60-U0	120deg
TP-PL1S41RK-40-U0	120deg
TP-PL1S42RK-60-U0	120deg

• Lighting Output Lux Testing

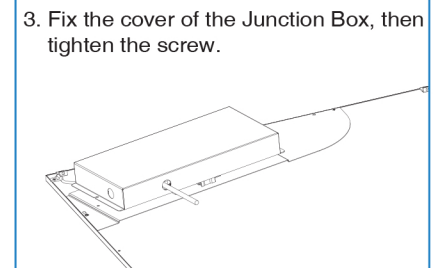
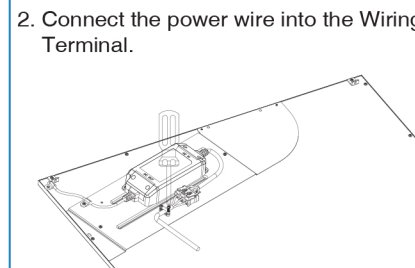
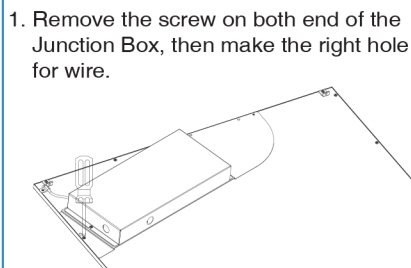
3.281ft	41.38, 140.2fc	9.433ft
1m	445.4, 1509lx	287.51cm
6.562ft	10.35, 35.06fc	18.87ft
2m	111.4, 377.3lx	575.03cm
9.843ft	4.598, 15.58fc	28.3ft
3m	49.49, 167.7lx	862.54cm
13.12ft	2.586, 8.764fc	37.73ft
4m	27.84, 94.33lx	1150.05cm
16.4ft	1.655, 5.609fc	47.16ft
5m	17.82, 60.37lx	1437.57cm
Height	Eavg, Emax	Angle: 110.35deg
		Diameter

Product Code	2M	3M
TP-PL1S22RK-40-U0	typ. 280-305Lux	typ. 124-135Lux
TP-PL1S22RK-60-U0	typ. 445-490Lux	typ. 190-210Lux
TP-PL1S41RK-40-U0	typ. 280-305Lux	typ. 124-135Lux
TP-PL1S42RK-60-U0	typ. 445-490Lux	typ. 190-210Lux

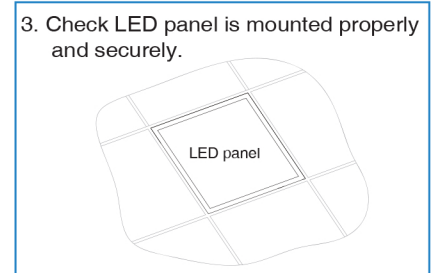
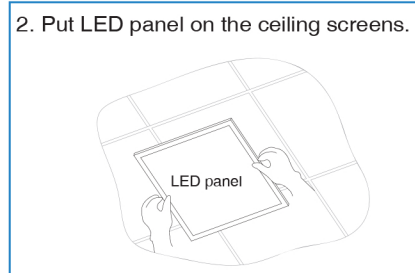
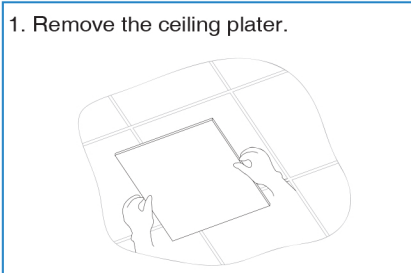
Specifications

• Installation Instructions

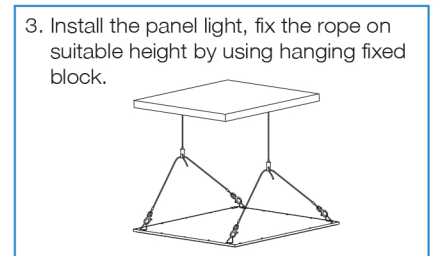
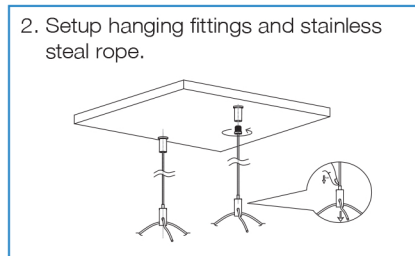
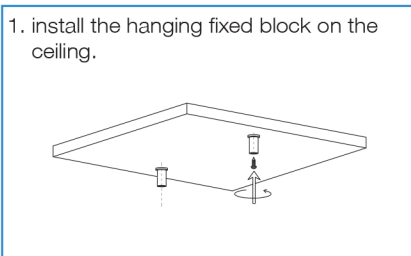
Schematic diagram for power line installation



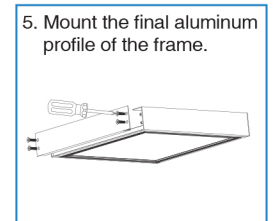
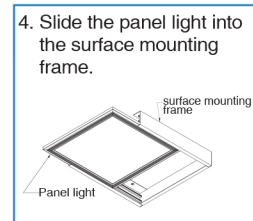
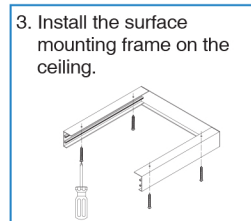
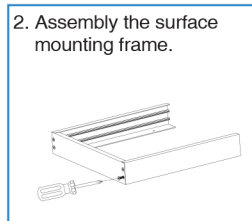
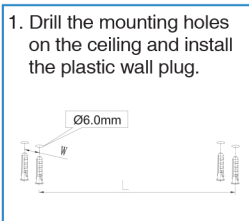
1. Schematic diagram for recessed installation



2. Schematic diagram for suspending installation



3. Schematic diagram for surface mounting installation



• Package

Product Type	Rated Power	Inner Box	Outer Carton	Qty/Carton	Unit N.W	G.W/Carton
2x2ft	40W / 60W	640 x 640 x 85mm	660 x 190 x 655mm	4Pcs	4045g	19.0Kg
4x1ft	40W		1265 x 355 x 95mm	2Pcs	4200g	12.5Kg
4x2ft	60W		1265 x 655 x 95mm	2Pcs	8400g	19.3Kg

! CAUTION

- ※ In case of electric shock, please make sure the power is off when installation is made.
- ※ The lamp should be installed and operated by a qualified electrician or technician in accordance with relevant local codes.
- ※ Do not use sharp tools near or on the surface of the lamp.
- ※ Unpack and carefully examine the product. Report any damage and save all packing materials if any portion of the product was damaged during transportation.